



SECURITE & DESIGN

FIRE EXTINGUISHER FURNITURE - CAMEO COVER









COVER CAMEO

COVER

2x Standard Colors
+180 RAL Shades On order
1x material : Steel

ACCESSORY

Wall-mounted Signage

CAMEO OVERVIEW

COVER FOR 1 EXTINGUISHER
TYPE 6L/6KG OR CO2 2KG

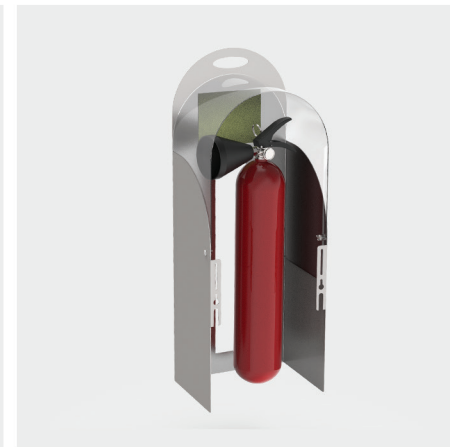
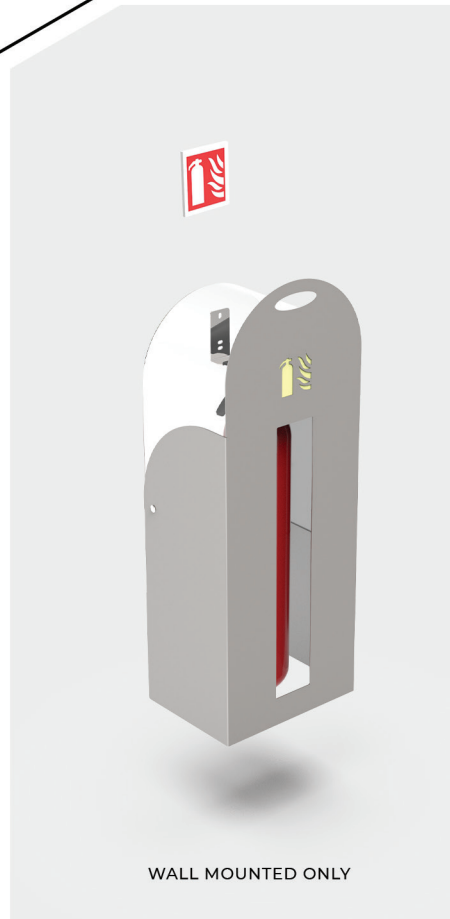
1 SETUP WALL MOUNTED

TECHNIQUE

ALUMINIUM COVER 20/10TH
EPOXY POWDER COATING
RED OR PHOTOLUMINESCENT PICTOGRAM SIGN
POLYCARBONATE FRONT AND HOOD 20/10TH
TRANSPARENT OR MATTE (FROSTED)
(350X MORE RESISTANT THAN GLASS)

SIZES

HEIGHT : 760mm
WIDTH : 280mm
DEPTH : 210mm
WEIGHT : 3,5kg / 6.6l Lbs

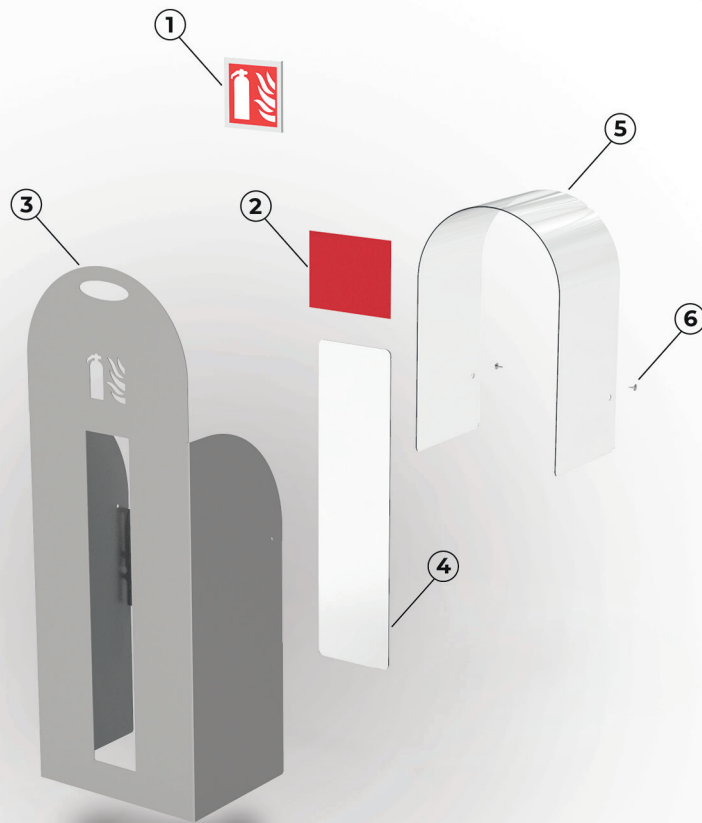




CAMEO 360° VIEW



CAMEO ELEMENTS



EXTINGUISHER SIGNAGE (OPTIONAL) / **1**

COLOR PICTOGRAM SIGN / **2**

COVER CAMEO / **3**

FRONT / **4**

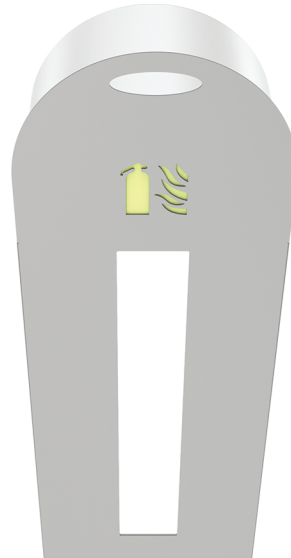
HOOD / **5**

SCREWS & VIKING NUTS / **6**

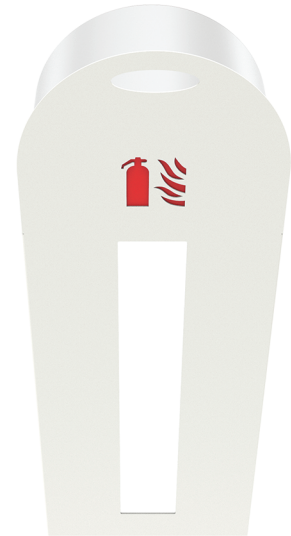




COLORS STANDARD



RAL 9006 KT28 - ALUMINIUM GREY
EPOXY POWDER COATING



RAL 9016 - WHITE
EPOXY POWDER COATING

CUSTOM COLORS



FREE CHOICE OF COLORS ON THE CLASSIC RAL
COLOR CHART
(OTHER SPECIFIC RAL COLORS ON REQUEST)

ADDITIONAL COST AND TIME TO BE FORESEEN
DEPENDING ON COLORS AND QUANTITY ORDERED

FROM 1 TO 10 UNITS : FLAT RATE
FROM 11 UNITS AND MORE : UNIT PRICE

CLASSIC RAL COLOR CHART AVAILABLE IN PAPER OR
DIGITAL VERSION (ON REQUEST)

CAMEO BENEFITS

STYLE : BI-MATERIAL

The Cameo model is distinguished by its two-material style:

- > Its steel structure
- > Polycarbonate facade and headdress

Both imputrescible and stainless. Its asset: it is available in the 180x shades available on order.



RANGE : TRANSPARENT OR FROSTED

The facade as well as the cap of the Cameo model exists in two different versions :

- > Transparent
- > Frosted

Those gives it 350 x more resistance than glass.

Polycarbonate provides subtle visibility to the rollover of the extinguisher and reassuring it is a real advantage for the visibility of the fire extinguisher.



VISIBILITY: INTEGRATED PICTOGRAM SIGNS

Standard fire extinguisher pictogram:

1x laser cutting in front of the cover.

To ensure increased visibility of the rollover, the Caméo is available in red as well as in photoluminescent pvc (visible in the dark).



CAMEO BENEFITS



FIXING :

The Cameo is a cover and must therefore be exclusively fixed to the wall. It is not permitted by the safety commissions to install the fire extinguisher in contact with the ground and just cover it with a cover.



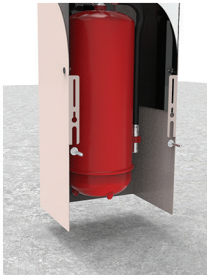
SECURITY :

INCREASED FIRE EXTINGUISHER PROTECTION

Provided by the 2mm thick steel component cover. The cover protects the fire extinguisher :

- > Voluntary degradation (vandalism)
- > Unintended degradation (shocks)

Provides a much better guarantee than the fire extinguisher is functional.



ACCESSIBILITY:

OPENING SYSTEM - System called "Lift-place"

Simply place your hand in the wrist facing you, lift it, to open it from its wall and then place it on the floor. The rollover is designed to stand without support once the ground.

CAMEO ACCESSORIES

EXTINGUISHER SIGNAGE PLATE

AS A WALL INSTALLATION, IT DISCREETLY FIT THE WALL-MOUNTED FURNITURE.

COMPOSITION PHASE :

- STEP 1 : PLATE MATERIAL'S CHOICE
- STEP 2 : PRINTED PICTOGRAM'S CHOICE*
- STEP 3 : FIXING

*PICTOGRAM LIBRARY AVAILABLE ON DEMAND **

SIZES

HEIGHT : 100 ou 130mm

WIDTH : 100mm

THICKNESS : Depending on the material chosen

Available on single sale, with other pictograms on request

SILVER, GOLD OR
BUSHED COPPER
THICKNESS: 3mm



SILVER, GOLD OR
RED MIRROR
THICKNESS: 3mm



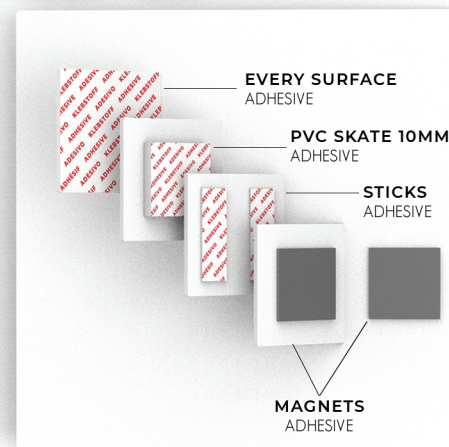
COLORLESS PMMA
THICKNESS : 5mm



WHITE MAT
THICKNESS : 5mm



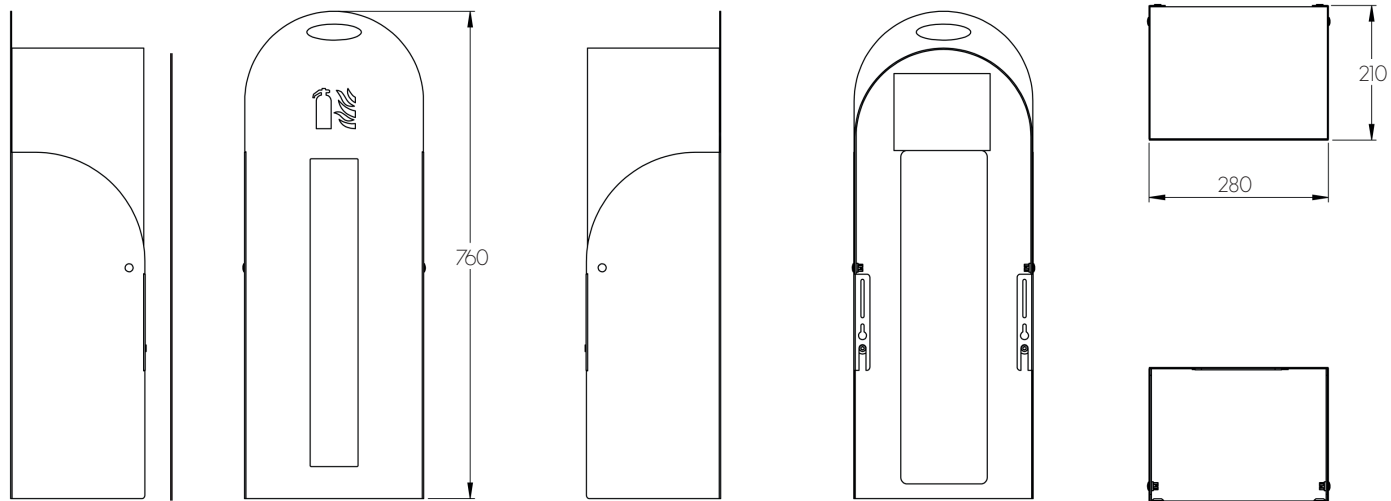
PHOTOLUMINESCENT
THICKNESS : 1.6mm





CAMEO

TECHNICAL FILE



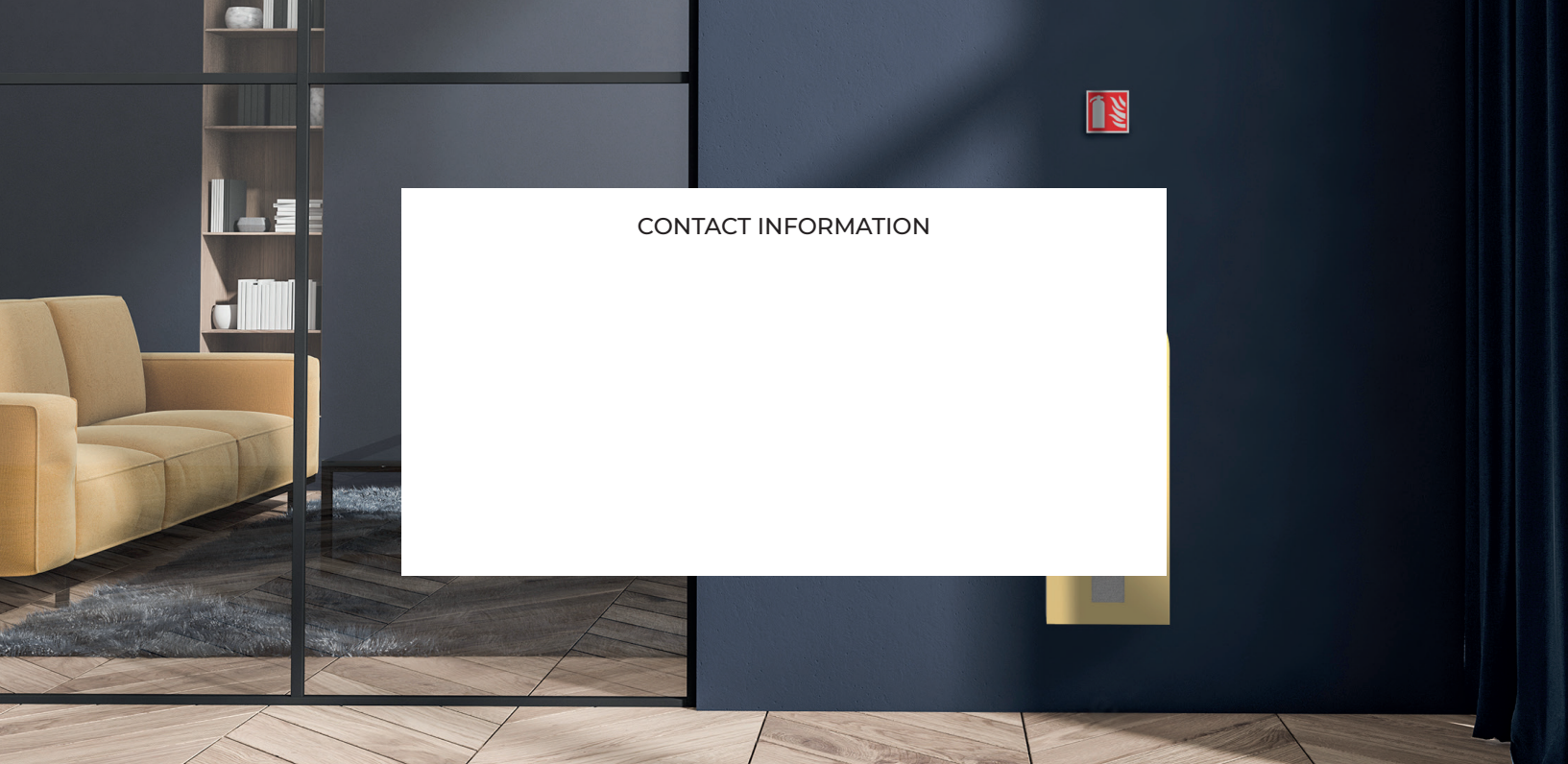
SIZES EN MM

CAMEO TECHNICAL FILE

FIOR 1X TYPE OF FIRE EXTINGUISHER	6L - 6Kg - CO2 2Kg
TYPE OF INSTALLATION	Wall mounted (support included - hardware not included)
OPENING TYPE	Lift and Install Cover on Floor
COVER + FRONT + HOOD	H.760mm - W.280mm - D.210mm - Weights 5kg / 11.02Lbs
MATERIALS	Steel Cover 1.5mm
HOOD MATERIALS + FRONT	Polycarbonate 2mm - Vinyl PVC frosted adhesive
COVER STANDARD COLORS	2 Standard Colours + 180 RAL Colours to order (Matt, Glossy, Satin, Fine texture): Epoxy powder coating
INTEGRATED PICTOGRAM SIGNS	Laser Cutting + PVC : Red, Photoluminescent, White, Black & Custom Colors (RAL choice)
OPTIONAL SIGNAGE	Wall mount Material of your choice (brushed aluminium, brushed copper, brushed gold, silver mirror, red mirror, golden mirror, white PMMA, translucent PMMA, photoluminescent) Choice of pictogram to be printed, with or without fire class
CONCEPTION, DESIGN & MANUFACTURE	France







CONTACT INFORMATION

SECURITE & DESIGN

FIRE EXTINGUISHER FURNITURE - CAMEO COVER