

S&D

by CSiD
CREATIVE SOLUTIONS
FOR INDUSTRIAL DESIGN

CABINETS RANGE, COVERS AND STANDS FOR EXTINGUISHERS



ORIGINE
FRANCE
GARANTIE

GARANTIE
5 ans
GARANTIE

Fire Furniture, the design solution to integrate your extinguishers.



A DESIGN SOLUTION

How to integrate a fire extinguisher in the decoration of an establishment?

This question is a major issue for architects and decorators and the technical constraints are frequent.

After long research on shapes and materials, we have developed a complete range of fire furniture and signage.

For one or two fire extinguishers, floor or wall mounted, partially or fully integrated, choose the right aesthetic and regulatory solution.

A MASTERED EXPERTISE

Design, cutting, bending, welding, grinding, degreasing, painting, deburring, sanding, assembly.

Each model of fire furniture meets strict manufacturing specifications.

Many manufacturing and finishing operations are carried out by hand: our profession requires excellence and passion.

Our expertise and the mastery of our tools allow us to offer durable products.

THE ART OF CUSTOMIZATION

We realize your custom projects from the most classic to the most innovative.

After analyzing your request, our design office will meet your qualitative and organizational requirements.

We work from your plans or your specifications and make a prototype according to the complexity of the project.

All our expertise and our machinery are at your service to deliver a 100% customized furniture.

CABINETS

Completely dressing the fire extinguisher
Can be floor and/or wall mounted



Scan to discover the full range
Brochure, color chart, visual, video, 3D, technical file, etc.

CABINET / ALTO SINGLE+ ALTO HIGH CAPACITY

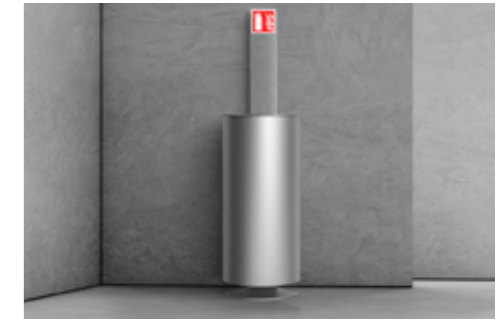
The emblematic model of the furniture range S&D.



CAN BE INSTALL IN AN ANGLE



HIGH CAPACITY MODEL FOR CO2 5KG



SIGNAGE TOTEM (OPTIONAL)

DESCRIPTION

CABINET FOR 1 EXTINGUISHER
TYPE 6L/6 KG OR 9L/9KG OR CO2 5KG

Red or photoluminescent signage

Increased visibility of the extinguisher in the dark

Drillings for security seal

Instant verification of the opening of the box (not supplied)

Mounting holes on base

Definitive and secure installation of the box on the ground

VERSION(S) & COLORS

2 Installations

Wall mounted (screws not included)
Placed on the ground on a ballasted base

5 standard colors



Custom Colors | 180 RAL available on order (additional cost and delay to be expected).
From 1 to 6 : Flat rate
From 7 : Unit price

Accessories

Fire extinguisher signage : Wall-mounted or Totem mounted on box

Opening System

System called : «Pivot linkage». Pull on the right side to open.

TECHNIC

Steel Cabinet 20/10e
Steel Base 60/10e (optional)
Epoxy Powder Painting
Red or photoluminescent pvc signage
PMMA Totem 8mm (optional)

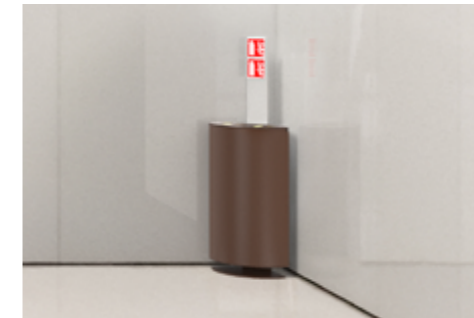
2 Sizes

For Alto Single :
Height : 700mm (760mm on base)
Width : 320mm
Depth : 220mm (226mm on base)
Weight : 7,5kg (14kg on base)

For Alto High Capacity :
Height : 801mm (857mm on base)
Width : 443mm
Depth : 267mm (273mm on base)
Weight : 16,5kg (23,5kg on base)

CABINET / ALTO DOUBLE

The emblematic model of the S&D furniture range, in a version for 2 extinguishers.



CAN BE INSTALL IN AN ANGLE



INSTALLATION AND GROUND ANCHORING (OPTIONAL)



WALL MOUNTED

DESCRIPTION

CABINET FOR 2 EXTINGUISHERS
TYPE 6L/6KG OR 9L/9KG + CO2 2KG

Red or photoluminescent signage

Increased visibility of the extinguisher in the dark

Drillings for security seal

Instant verification of the opening of the box (not supplied)

Mounting holes on base

Definitive and secure installation of the box on the ground

VERSION(S) & COLORS

2 Installations

Wall mounted (screws not included)
Placed on the ground on a ballasted base

5 standard colors



Custom Colors | 180 RAL available on order (additional cost and delay to be expected).
From 1 to 6 : Flat rate
From 7 : Unit price

Accessoires

Extinguisher signage plate : Wall-mounted or Totem mounted on box

TECHNIC

Steel Cabinet 20/10e
Steel Base 60/10e (optional)
Epoxy Powder Painting
Red or photoluminescent pvc signage
PMMA Totem 8mm (optional)

Sizes

Height : 700mm (760mm on base)
Width : 435mm
Depth : 245mm (251mm on base)
Weight : 11,5kg (19kg on base)

Opening system

System called : «Pivot linkage». Pull on the right side to open.

CABINET / HARMONY

A simple shape that adapts to any places



CUSTOMIZABLE DOOR AND CABINET



FLOOR STANDING WITH OR WITHOUT BASE



WALL MOUNTING

DESCRIPTION

CABINET FOR 1 EXTINGUISHER
TYPE 6L/6 KG OR 9L/9KG OR CO2 2KG

Red or photoluminescent signage
Increased visibility of the extinguisher in the dark

Rear Masking Plate

Aluminum plate to cover the rear of the cabinet (optional)

400x finishes for the door

A unique range offering an infinite number of combinations

3 Installations

Wall mounted (screws not included)
Floor standing on ballasted base (optional)
Floor standing on glued skates (supplied)

VERSION(S) & COLORS

16x standard colors - cabinet



Custom Colors | 180 RAL available on order (additional cost and delay to be expected).
From 1 to 6 : Flat rate
From 7 : Unit price

16x standard colors - door

+100x standard finishes, distributed over 9x shades (wood, stone, matte, metallic, mirrors, ...). On order +180 RAL and +100 acrylic glass colors. Available : print of a logo or a decoration on the door.

Opening system

System called : «Pull-and-pull». The door is inserted into two lugs and held in place by a magnet.

TECHNIC

Steel Cabinet 20/10e
Steel Base 50/10e (optional)
Epoxy Power Coating
Red or photoluminescent pvc signage
PMMA Totem - 8mm (optional)

2 Sizes

Height : 720mm (770mm on base)
Width : 290mm
Depth : 210mm
Weight : 9,2kg (11,2kg on base)

Accessories

Fire extinguisher signage plate: wall mounting or totem mounted on cabinet
Rear masking plate
Ballasted base



CABINET / OPERA

The Opera model exists in 3 bi-color combinations



WALL OR FLOOR MOUNTED



OPENING SYSTEM LIFT - PLACE



SIGNAGE TOTEM (OPTIONAL)

DESCRIPTION

CABINET FOR 1X EXTINGUISHER
TYPE : 6L/6KG OR 9L/9KG OR CO2 2KG

Red or photoluminescent pictogram sign

Increased visibility of the extinguisher in the dark

Base included

A design that allows for wall and floor installation without additional costs

Installation of the fire extinguisher

Drilling on the back of the structure to screw in the approved support bracket

VERSION(S) & COLORIS

2 Setup

Wall mounted
And/or placed on the floor

3 standard bi-colors



Custom Colors | 180 RAL available on order (additional cost and delay to be expected).
From 1 to 6 : Flat rate
From 7 : Unit price

Accessories

Fire extinguisher signage plate: wall mounting or totem mounted on cabinet

TECHNIQUE

Steel structure 25/10e
Steel cover 12/10e
Epoxy Power Coating
Red or photoluminescent pvc signage

Dimensions

Height : 780mm
Width : 300mm
Depth : 210mm
Weight : 12kg / 26.45lbs

Opening system

System called : «Lift and place». The cover is nested on the base

CABINET / SOPRANO

In one or bi-colors. The model with the largest interior volume



OPENING SYSTEM LIFT - PLACE



WALL OR FLOOR MOUNTED



MONO OR BI-COLOR

DESCRIPTION

CABINET FOR 1 EXTINGUISHER
TYPE 6L/6 KG OR 9L/9KG OR CO2 2KG

Red or photoluminescent signage
Increased visibility of the extinguisher in the dark

Rear Masking Plate

Aluminum plate to cover the rear of the cabinet (optional)

Mounting holes on base

Definitive and secure installation of the box on the ground

2 Installations

Wall mounted (screws not included)
Floor standing (base included)

VERSION(S) & COLORIS

5 standard colors



Custom Colors | 180 RAL available on order (additional cost and delay to be expected).
From 1 to 6 : Flat rate
From 7 : Unit price

Accessories

Extinguisher Signage Plate : wall-mounted or on a totem pole mounted on an enclosure
Rear masking plate
Maintaining Plate for CO2 2kg
Corner wall bracket

TECHNIC

Steel cabinet 12/10e
Steel base 20/10e (optional)
Epoxy powder coating
Red or photoluminescent pvc signage
PMMA totem - 8mm (optional)

Sizes

Height : 700mm (760mm on base)
Width : 320mm
Depth : 220mm (226mm on base)
Weight: 7,5kg (14kg on base)

Opening System

System called : «Lift and place». The cover is nested on the base

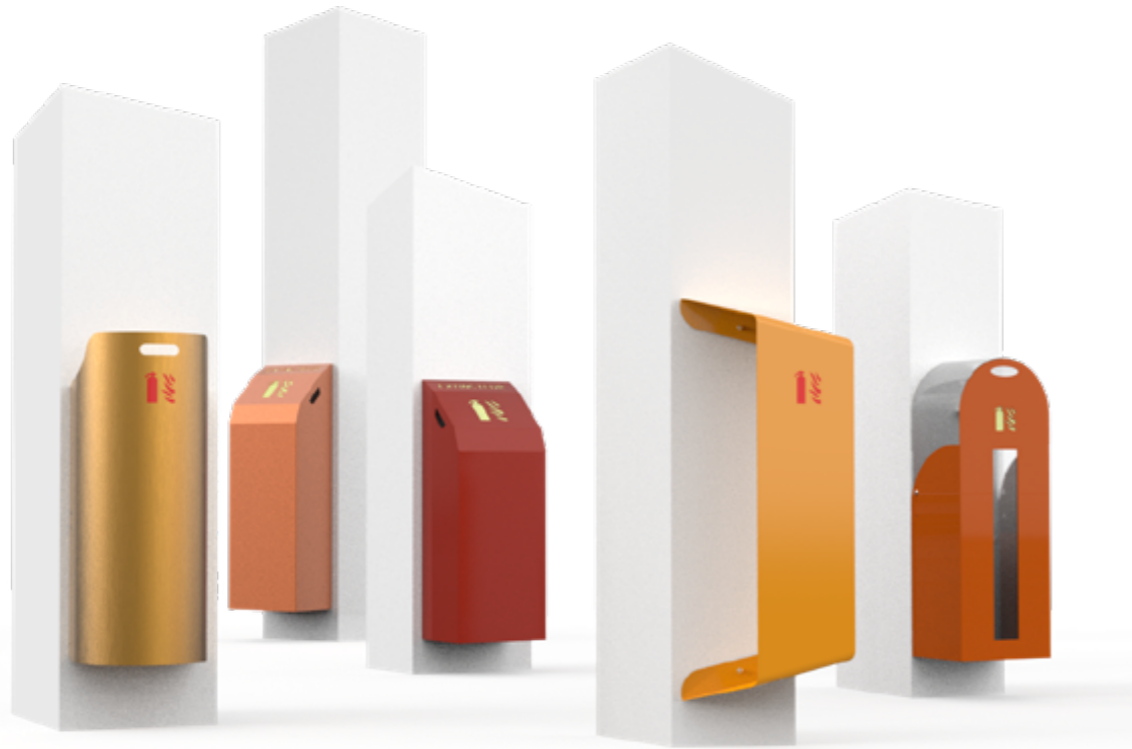


COVERS

Partially covering the extinguisher Exclusively fixed to the wall



Scan to discover the full range
Brochure, color chart, visual, video, 3D, Technical Files, etc.



LIFTING COVER / CINTRO

Its simplicity will bring elegance to any space



ANODIZED OR PAINTED ALUMINUM



WALL-MOUNTED (FASTENER INCLUDED)



NO ANGLE - ALL CURVED

DESCRIPTION

COVER FOR 1 EXTINGUISHER
TYPE 6L/6KG OR CO2 2KG

Extinguisher Signage

Adhesive vinyl (ready to install): red or black

Minimalist Design

No protruding angles - Effective protection of the facility's users

Easy Access

Mounted on two included mounting support (screws not included)

Accessory

Fire extinguisher signage: wall mounting

VERSION(S) & COLORS

1 Installation

Wall mounted (support included, screws not included)

Anodized Aluminum : 4x standard colors



Painted Aluminum : 5x standard colors



Custom Colors | 180 RAL available on order (additional cost and delay to be expected).
From 1 to 10 : Flat rate
From 11 : Unit price

TECHNIC

Cut and rolled aluminum
Surface treatment : anodization or epoxy powder coating
Adhesive signage included

Sizes

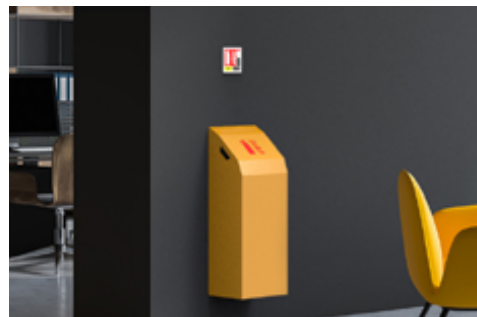
Height : 730mm
Width : 300mm
Depth : 210mm
Weight : 2KG

Opening System

System called : «Lift and place»

LIFTING COVER / OPUS + OPUS EXTENDED

Choice of two rot-proof and rust-proof materials



WALL MOUNTED (SUPPORT INCLUDED)



RED OR PHOTOLUMINESCENT SIGNAGE



COMPOSITE OR PAINTED ALUMINUM

DESCRIPTION

COVER FOR 1 EXTINGUISHER
TYPE 6L/6KG OR 9L/9KG OR CO2 2KG
EXTENDED VERSION AVAILABLE FOR EXTINGUISHER TYPE 9L/9KG

Photoluminescent signage

Increased visibility of the extinguisher in the dark

Aluminum

Rot-proof and stainless material

Opening system

System called «lift and place». It is placed on a support (included) screwed to the wall (screws not included)

VERSION(S) & COLORS

1 Installations

Wall mount - fixing support included (screws not included)

Painted Aluminum : 5x standard colors



Composite Aluminum : 10x Standard Colors



Custom Colors | 180 RAL available on order (additional cost and delay to be expected).

From 1 to 10 : Flat rate
From 11 : Unit price

TECHNIC

2 materials of your choice available:
Aluminum 20/10e - Epoxy Paint
Composite Aluminum 30/10e
Red or photoluminescent Signage

Sizes

2 Heights :
H749mm : for 6L/6KG or CO2 2KG
H849mm : for 9L/9KG
Width : 290mm
Depth : 211mm
Weight: 2,5KG (3kg in height 849mm)

Accessory

Fire extinguisher signage: wall mounting

LIFTING COVER / CAMEO

Two-material styling offers subtle visibility of the extinguisher



PAINTED ALUMINUM + POLYCARBONATE



RED OR PHOTOLUMINESCENT SIGNAGE



WALL MOUNTED

DESCRIPTION

COVER FOR 1 EXTINGUISHER
TYPE 6L/6KG OR CO2 2KG

Red or photoluminescent signage

Increased visibility of the extinguisher in the dark

Bi-material design

Modern style painted steel and polycarbonate

Shock resistant

Polycarbonate 350 times stronger than glass

VERSION(S) & COLORS

1 Installation

Wall mounted (screws not included)

2 standard colors



Custom Colors | 180 RAL available on order (additional cost and delay to be expected).
From 1 to 10 : Flat rate
From 11 : Unit price

Accessory

Fire extinguisher signage: wall mounting

TECHNIC

Aluminum cover 20/10e
Epoxy Powder Paint
Red or photoluminescent signage
20/10e polycarbonate front and cover
Transparent or frosted

Sizes

Height : 760mm
Width : 280mm
Depth : 210mm
Weight: 5KG

Opening System

System called : «Lift and place»

LIFTING COVER / VOLUTO From 6x units

An avant-garde style and the first product in the range to be delivered flat-packed: fully removable



MONO OR BI-COLOR



WALL MOUNTED



RED OR PHOTOLUMINESCENT SIGNAGE

DESCRIPTION

COVER FOR 1 EXTINGUISHER
TYPE 6L/6KG OR 9L/9KG OR CO2 2KG

Clever: completely removable,
delivered flat
Easy assembly without tools (screws included)

Mono or bi-color
Structure | Cover + sides in the same or
different colours

Opening system
System called «lift and place». It is placed
on a support (included) screwed to the wall
(screws not included)

VERSION(S) & COLORIS

1 Installation
Wall mounted

Structure | Cover + sides : 21x standard
colours: 16x fine texture + 5x satin



Two-colour process on standard colours
available from 6x units.

Custom colours | 180 RAL available on order
(extra cost and time required)
From 1 to 10: flat rate
From 11: unit price

TECHNIC

Steel cover 12/10e
Epoxy Powder Painting
Red or photoluminescent Signage

Sizes

Height : 757mm
Width : 348mm
Depth : 229mm
Weight : 4kg

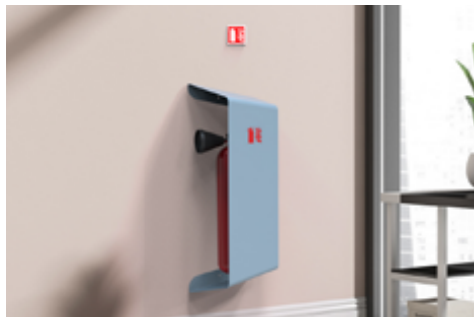
Accessory

Fire extinguisher signage: wall mounting



FIXED COVER / REVERSO

180° rotatable, it adapts to unusual and modern establishments



16 STANDARD COLORS



FIXED TO THE WALL - REVERSIBLE INSTALLATION



RED SIGNAGE

DESCRIPTION

COVER FOR 1 EXTINGUISHER
TYPE 6L/6KG OR 9L/9KG OR CO2 2KG

Extinguisher Signage
Adhesive vinyl (ready to apply): red

Sloping top
Prevents the placement of unwanted
objects

Opening System
Free system. 180° swivel, easy extraction to
the left or right

VERSION(S) & COLORS

1 Installation
Reversible wall mounted

16 standard colors



Custom colors:
From 1 to 15: flat rate.
From 16 and more: unit price.

Accessory

Fire extinguisher signage: wall mounting

TECHNIC

Steel cover 15/10th
Epoxy Powder Painting
Adhesive signage included


Sizes

Height : 848mm
Width : 348mm
Depth : 208mm
Weight : 3.5KG

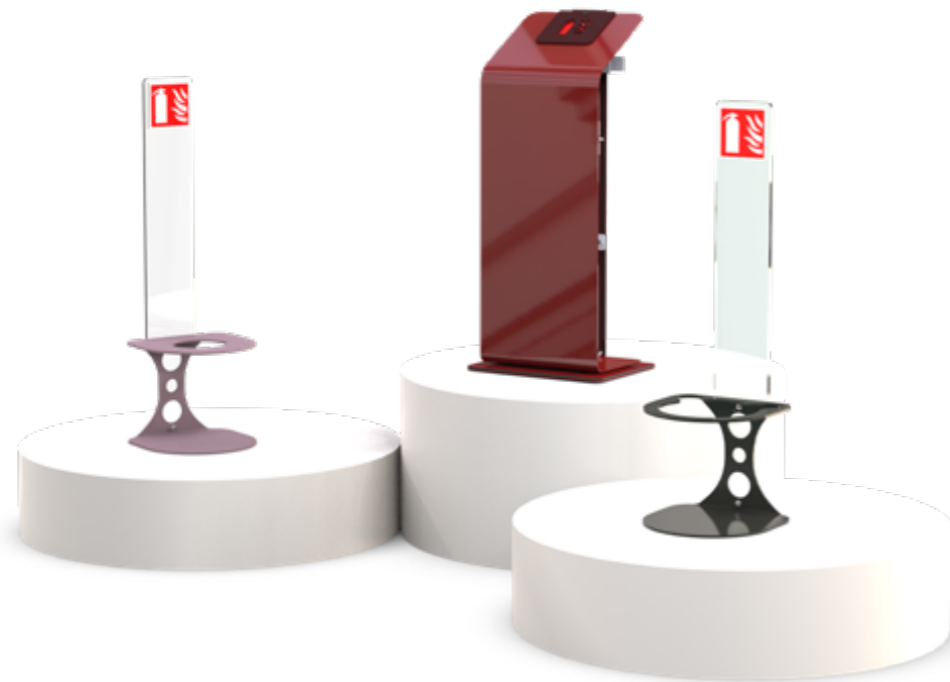


STANDS

Partially covering the extinguisher
Can be freely arranged in the space



Scan to discover the full range
Brochure, color chart, visual, video, 3D, technical file, etc.



STAND & FIXED COVER / TEMPO

Dual function, increased freedom for easy integration into any facility



MONO, BI OR TRI COLOR



SIGNAGE TOTEM (OPTIONAL)



WALL-MOUNTED AND/OR FLOOR-STANDING

DESCRIPTION

STAND FOR 1 EXTINGUISHER
TYPE 6L/6KG OR 9L/9KG OR CO2 2KG

2 Installations

To be fixed to the wall and placed on the floor on a base

Mono, Bi ou Tri Colors

Faceplate, support ring and base in the same or different colors

Accessories

Fire extinguisher signage: wall mounting
Maintaining CO2 2 KG
First aid kit holder
Stand

VERSION(S) & COLORS

Front + Support ring : 21x standard colors : 16x fine texture + 5x satin



Base: 21 standard colors + 4 finishes of PMMA 8mm

Custom color | 180 RAL available on order (extra cost and delay to be expected)

For ring and front panel:

From 1 to 10: flat rate
From 11: unit price

For base: from 1 to 28: flat rate. From 29: unit price

TECHNIC

Steel facade 20/10e
Steel support ring 40/10e
Steel Base 40/10e ou Acrylic Glass 8mm
Epoxy Powder Painting
Red or photoluminescent signage

Sizes

Height : 761mm (769mm on PMMA base, 765mm on steel base)
Width : 290mm (336mm on base)
Depth : 222mm (249mm on base)
Weight: 9kg (9,8kg on PMMA base, 9,7kg on steel base)

Opening System

The «free» system. Simply pull the extinguisher to one side to remove it from the stand

STAND / PLOT Ø120MM OR Ø190MM*

Subdued, discreet, they blend with simplicity in an environment



SIGNAGE TOTEM (OPTIONAL)



WALL-MOUNTED AND/OR FLOOR-STANDING



ITS SHAPE PROTECTS THE TANK OF THE EXTINGUISHER

DESCRIPTION

STAND FOR 1 EXTINGUISHER
TYPE 6L/9L OR 6KG/9KG OR CO2 2KG (SOME OF THE CO2 5KG IN THE 190MM DIAMETER)
INTERIOR CUTOUT Ø120MM OR Ø190MM

2 Installations

To be fixed to the wall and/or placed on the floor

Signage Totem

Ideal accessory in front of a glass surface

Safety roll bar

Protection of the extinguisher against shocks

*Also available with Dubernard extinguisher

VERSION(S) & COLORS

2 diameters

190mm : FOR 6L/6KG OR 9L/9KG OR CO2 5KG

110mm : FOR CO2 2KG

5 standard colors



Custom Colors | 180 RAL available on order (additional cost and delay to be expected).

From 1 to 10 : Flat rate

From 11 : Unit price

Accessory

Fire extinguisher signage: wall-mounted or totem mounted on stand

TECHNIC

Steel Stand 50/10e
Epoxy Powder Painted
PMMA - Totem 8mm (optional)

Sizes

Height : 220mm (787mm with totem)

Width : 250mm

Depth : 250mm (260mm with totem)

Weight : 4,5KG (5,5KG with totem) Ø120MM ou 4KG (5KG with totem) Ø190MM

Opening system

The «free» system. Simply lift the extinguisher to remove it from the stand



CHOOSE YOUR FURNITURE ACCORDING TO YOUR NEEDS



Find all our products on

Google Drive

		CABINETS					COVERS						STANDS			
		HARMONY	ALTO SINGLE	ALTO DOUBLE	ALTO HC	SOPRANO	OPERA	CINTRO	OPUS	OPUS E.	CAMEO	REVERSO	VOLUTO	PLOT 120MM	PLOT 190MM	TEMPO
	Extinguisher type (subject to dimensional verification)															
	6L-6Kg	✓	✓	✓	✓	✓	✓	✓	✓	✓	✓	✓	✓	-	✓	✓
	9L-9Kg	✓	✓	✓	✓	✓	✓	✓	✓	✓	✓	✓	✓	-	✓	✓
	CO2 2Kg	✓	✓	✓	✓	✓	✓	✓	✓	✓	✓	✓	✓	✓	✓	✓
	CO2 5Kg	-	-	-	✓	-	-	-	-	-	-	-	-	-	✓	-
2x 6L-6Kg - CO2 2Kg	-	-	✓	✓	-	-	-	-	-	-	-	-	-	-	-	
	Type of furniture installation															
	Wall-mounted	✓	✓	✓	✓	✓	✓	✓	✓	✓	✓	✓	✓	✓	✓	✓
	Corner Wall-mounted	-	-	-	-	✓	-	-	-	-	-	-	-	-	-	-
	Free on the floor (ex: hall - glass surface)	✓	✓	✓	✓	✓	✓	-	-	-	-	-	-	✓	✓	✓
	Floor-mounted (leaning against the wall)	✓	✓	✓	✓	✓	✓	-	-	-	-	-	-	✓	✓	✓
	Floor installation in wall corners	-	✓	✓	✓	-	-	-	-	-	-	-	-	✓	✓	-
	Furniture Opening System															
	Lift and place (cover)	-	-	-	-	✓	✓	✓	✓	✓	✓	-	✓	-	-	-
	Pull-out (door)	✓	-	-	-	-	-	-	-	-	-	-	-	-	-	-
	Pivot link (door)	-	✓	✓	✓	-	-	-	-	-	-	-	-	-	-	-
	Position of the fire extinguisher															
	Free (placed in the furniture)	✓	✓	✓	✓	✓	✓	-	-	-	-	-	✓	✓	✓	✓
	On approved support	✓	-	-	-	-	✓	✓	✓	✓	✓	✓	✓	-	-	✓
	CO2 holding ring 2Kg (optional)	-	-	-	-	-	-	-	-	-	-	-	-	-	-	✓
	Customization															
	180 RAL colors (on request)	✓	✓	✓	✓	✓	✓	✓	✓	✓	✓	✓	✓	✓	✓	✓
	170 PMMA shades (on demand)	✓	-	-	-	-	-	-	-	-	-	-	-	-	-	-
	270 Polyrey decorations (on demand)	✓	-	-	-	-	-	-	-	-	-	-	-	-	-	-
	10 Aluminum composite colors (on demand)	✓	-	-	-	-	-	-	✓	✓	-	-	-	-	-	-
	Logo printing	✓	-	-	-	-	-	-	-	-	-	-	-	-	-	✓
	Style Material Colors															
	Partial cover (visible fire extinguisher)	-	-	-	-	-	-	✓	-	-	✓	✓	-	✓	✓	✓
	Total covering (extinguisher not visible)	✓	✓	✓	✓	✓	✓	-	✓	✓	-	-	✓	-	-	-
	Monochrome	✓	✓	✓	✓	✓	-	✓	✓	✓	✓	✓	✓	✓	✓	✓
	Bi/Tri-chrome	✓	-	-	-	✓	✓	-	-	-	✓	-	✓	-	-	✓
	Painted Steel	✓	✓	✓	✓	✓	✓	-	-	-	-	✓	✓	✓	✓	✓
	Painted Aluminum	✓	-	-	-	-	-	✓	✓	✓	✓	-	-	-	-	-
	Anodized Aluminum	✓	-	-	-	-	-	-	✓	✓	✓	-	-	-	-	-
	Composite Aluminum	✓	-	-	-	-	-	-	✓	✓	-	-	-	-	-	-
	PMMA (acrylic glass)	✓	-	-	-	-	-	-	-	-	-	-	-	-	-	✓
	Polycarbonate	-	-	-	-	-	-	-	-	-	✓	-	-	-	-	-
	HPL laminate (Polyrey)	✓	-	-	-	-	-	-	-	-	-	-	-	-	-	-
	Extinguisher signage															
	Red integrated (PVC or vinyl)	✓	✓	✓	✓	✓	✓	✓	✓	✓	✓	✓	✓	-	-	✓
	integrated photoluminescent (on demand)	✓	✓	✓	✓	✓	✓	-	✓	✓	✓	-	✓	-	-	✓
	Wall plate (optional)	✓	✓	✓	✓	✓	✓	✓	✓	✓	✓	✓	✓	✓	✓	✓
Totem (optional)	✓	✓	✓	✓	✓	✓	-	-	-	-	-	-	✓	✓	✓	

WHERE TO INSTALL THE FIRE FURNITURE ?

Hotel, restaurant, museum, airport, office, retirement home, store, showroom, shopping mall, cinema, place of worship...

At CSID, every project is unique.

Discover in this space a selection of remarkable places equipped with S&D products.

We would like to thank our reseller partners, installers and customers who have trusted us.



WHY INSTALL FIRE FURNITURE? ?



Security

Protect the extinguisher

Against deliberate damage:
vandalism

Against unintentional
damage : shocks

=

It is the guarantee of a
working extinguisher and
savings at the end of the day

Technic

Integrate the extinguisher

Respond to the constraints
related to the building's
specificities

Respond to the constraints
related to the users of the
building

=

The guarantee of a compliant
and functional installation

Design

Dress the extinguisher

Responding to the integration
desire into the decor

Respond to the desire for
innovation and avant-gardism

=

The guarantee of a visible fire
extinguisher installed in the
recommended place

PRESENTATION TOOLS / SALES TOOLS

Physical and digital tools intended for retailers and prescribers to facilitate the presentation of our products and the understanding of our ranges.

Available as a conditional loan or as a final purchase with a deferred payment offer.



STANDARD & CUSTOM COLOUR CHART



Get access to Standard colour chart
+
Custom colour chart

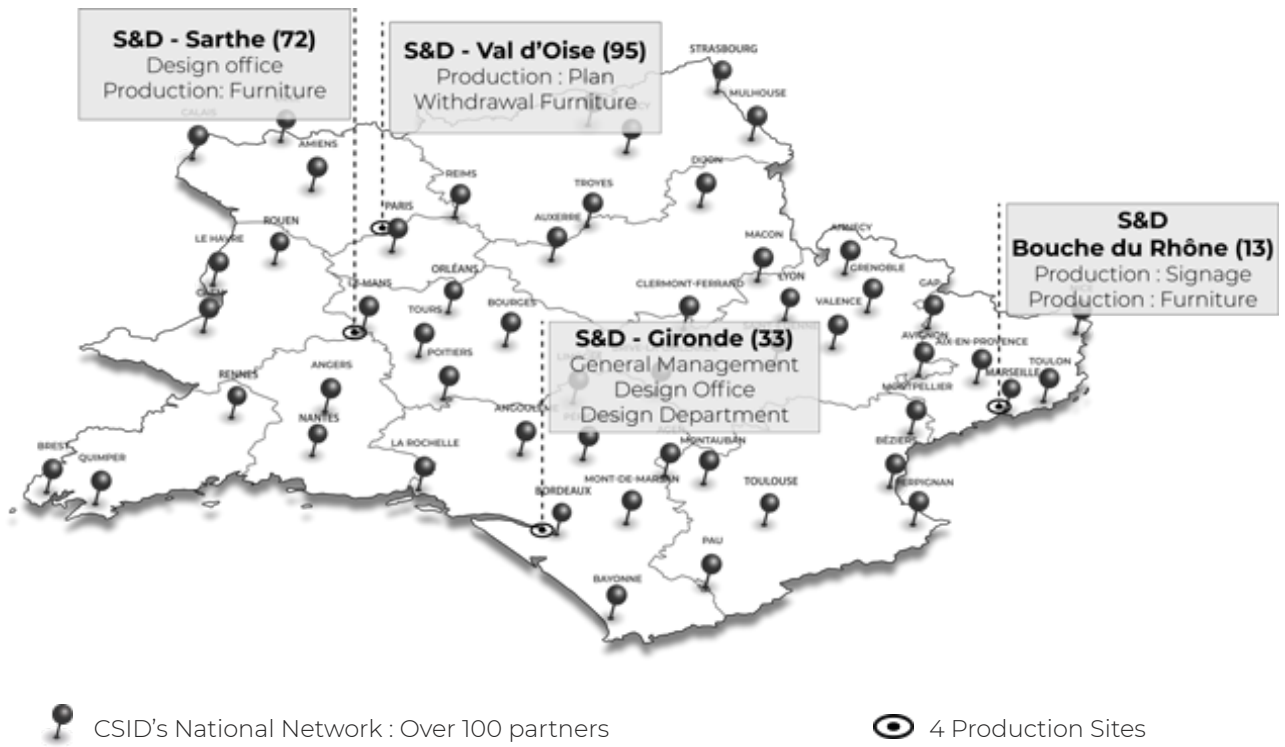
1000	1001	1002	1003	1004	1005	1006	1007	1011	1012
1013	1014	1015	1016	1017	1018	1019	1020	1023	1024
1024	1026	1027	1028	1031	1032	1033	1035	1036	1037
2000	2001	2002	2003	2004	2005	2007	2008	2009	2010
2011	2012	2013	3000	3001	3002	3003	3004	3005	3007
3009	3011	3012	3013	3014	3015	3016	3017	3018	3020
3022	3024	3026	3027	3031	3032	3033	4001	4002	4003
4004	4005	4006	4007	4008	4009	4010	4011	4012	5000
5001	5002	5003	5004	5005	5007	5008	5009	5010	5011
5012	5013	5014	5015	5017	5018	5019	5020	5021	5022
5023	5024	5025	5026	6000	6001	6002	6003	6004	6005
6006	6007	6008	6009	6010	6011	6012	6013	6014	6015
6016	6017	6018	6019	6020	6021	6022	6024	6025	6026
6027	6028	6029	6032	6033	6034	6035	7000	7001	7002
7002	7003	7004	7005	7006	7008	7009	7010	7011	7012
7013	7015	7019	7021	7022	7023	7024	7026	7030	7031
7032	7033	7034	7035	7036	7037	7038	7039	7040	7042
7043	7044	7045	7046	7047	7048	8000	8001	8002	8003
8004	8007	8008	8011	8012	8014	8015	8016	8017	8019
8022	8023	8024	8025	8028	8029	9001	9002	9003	9004
9005	9006	9007	9010	9011	9016	9017	9018	9020	9023

If the shades on our
standard colour
charts do not meet
your needs

Use the custom RAL
colour chart
+ 180 colours to choose
from the classic RAL
colour chart

(Other specific RAL on
demand)

Extracost and delay to
be foreseen according
to furniture, colour and
quantity ordered



HOW TO ORDER ?

You are a reseller

Ask us for a quotation,
or send us your order form by email

[Send us an email](#)

Discover our reseller's advantages and order one of
our sales tools

[Click to discover](#)

Become a reseller

[Write to us](#)

You are a company

Contact your fire extinguisher supplier directly

or

Send us a quotation request by email

or

[Send us an email](#)

Learn more about our direct sales policy, account
opening, payment conditions, after-sales service,
terms and conditions, our references, ...

[Click to discover](#)



Infos & orders

✉ sales@csid-design.com

☎ +33 (0)9 65 16 20 21

🌐 www.csid-design.com

Contact Us



Designer - Creator - Manufacturer since 2009

S&D

by **CSID**
CREATIVE SOLUTIONS
FOR INDUSTRIAL DESIGN